

CASE STUDY

DEFECT DIAGNOSIS AND REMEDIAL WORKS CONTRACT

PROJECT NAME

Rudge House, Canteloupe Road, East Grinstead RH19

CLIENT

Rudge House Management Ltd.

CONSTRUCTION VALUE/CONTRACT PERIOD

£40,000 over 6 weeks

CONTRACT TYPE

JCT Minor Works 2016

PROJECT DESCRIPTION

Our project involved diagnosing water ingress to some 20 projecting window bays to our 3 storey block of

flats that had been ongoing for years. With specialist scaffold access and pre-remedial works enabling investigations. B&A diagnosed the issue and then managed the local contractor to effect repairs that were completed on time and below budget.

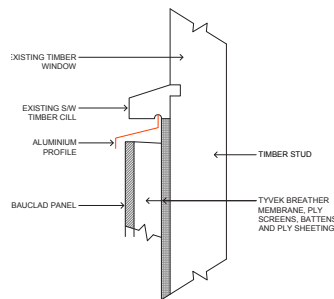


FIG. 1 - EXISTING

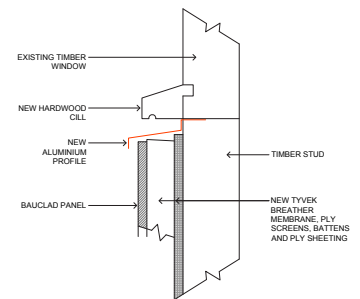
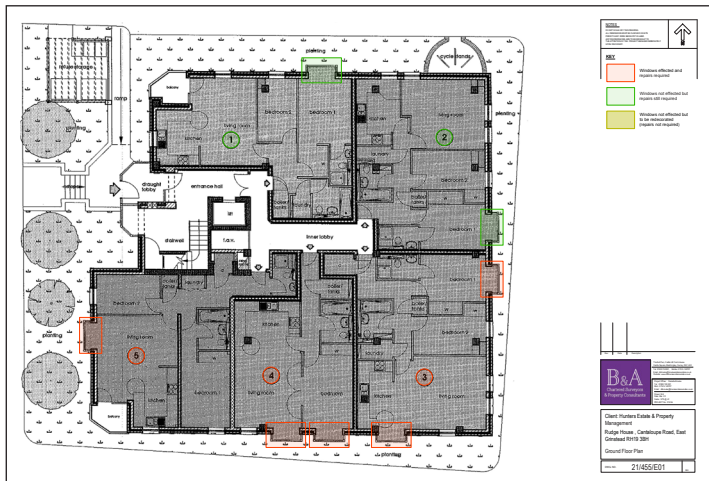


FIG. 2 - PROPOSED



T: +44 (0)1883 740 001
M: +44 (0)7515 149 707
E: dkbrooke@brookeandassociates.co.uk
WWW.BROOKEANDASSOCIATES.CO.UK



HEAD OFFICE & POSTAL ADDRESS
The Bull Pen Castle Hill Farm House Castle Square Bletchingley Surrey RH1 4LD

LONDON OFFICE
4th Floor 169 Piccadilly London W1J 9EH

SPECIALISTS IN
Access and Oversail
Asset Management/Stock Condition Survey
Building Defect Analysis
Building Reinstatement Cost Assessments
Building Surveys
Dilapidations
Party Wall Matters
Project Management